



# Entrepreneurship Facilitator Program

MAR 23 – MAY 23



The Disability Trust in partnership with Workforce Australia provides an Entrepreneurship Facilitator Program which is dedicated to helping you start and run your own business, in the Southern Highlands and Shoalhaven Region.

We are here to promote and encourage self-employment and entrepreneurship as well as help people to start and develop their business. We also assist existing micro-business owners to keep their small business open.

The specific areas we service are:



Mittagong  
Shellharbour  
Nowra  
Batemans Bay

**Entrepreneurship Facilitators** may also recommend other relevant small business support services, including Self-Employment Assistance and can provide help with the following activities and services;



- Networking
- Advisory
- Resources
- Business Plan
- Grants Availability
- Workshops
- Consultancy
- Introductions
- Events



# Digital Marketing Workshop

A successful workshop was held in Bowral at Creative Space on Thursday 23 February 2023, giving more than 30 local participants and advisors a chance to network and gain invaluable knowledge on marketing their small business.

The event was hosted by Entrepreneurship Facilitator Naomi Smith, who was joined by special guest speakers Doreen Brown of Let's Get Visible who shared her expert knowledge on SEO, the benefits of organic marketing and digital marketing strategies. Melissa Murdoch, Marketing Coordinator at The Disability Trust also presented on her expertise of social media strategy and content creation.

The workshop was a great opportunity for those with a small business or business idea to network, share ideas, gain lots of practical knowledge as well as resources on the theme of digital marketing.

## There was fantastic participant feedback:



## NEXT WORKSHOPS

10am -12 noon, Thursday 23 March 2023  
Digital Marketing and Leveraging Success  
at Nowra School of Arts - Annex

10am -12 noon, Thursday 25 May 2023  
Surviving and Thriving - Online Webinar

# New Access for Small Business Owners

Beyond Blue's NewAccess for Small Business Owners is a guided self-help mental health coaching program.

It's free, confidential and convenient. Available nationally by phone or video call, no GP referral is required.

Over 6 sessions, your mental health coach will work with you to manage stress and overwhelm using straightforward problem-solving approaches.

All mental health coaches are specially trained and have a small business background so they understand your unique challenges. It can help you reduce stress and overwhelm from everyday life stressors like running a small business, relationships, health or loneliness.

## NewAccess for Small Business Owners may be right for you if you:

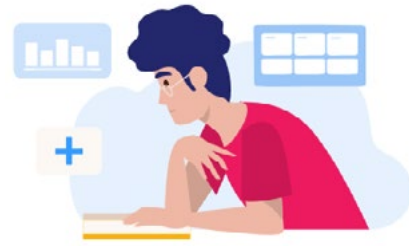
- are 18 years or older
- own a small business, or are a sole trader, with 20 employees or fewer
- aren't currently seeing a psychologist or psychiatrist.

NewAccess isn't a crisis support program. To find other support options, talk to your GP or visit Get mental health support.

## Program Structure

They'll guide you through a tailored, personal program, including:

- initial session – 60 minutes
- 5 weekly sessions – 30 minutes each
- follow up check-ins after you finish the program.



## What to expect

After you submit an enquiry you'll be contacted to talk about the program and booking in your first session.

## At your first session you and your mental health coach will:

1. Talk through your challenges
2. Develop a problem statement
3. Create a plan based on your needs.

If your symptoms are too severe or complex for this program, your coach will help you find a more appropriate service.

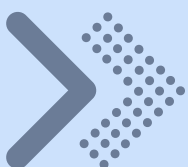
## After your initial assessment you'll have up to 5 sessions with your coach. In these weekly 30-minute sessions you'll:

- ✓ walk through your plan
- ✓ learn practical skills
- ✓ review your progress.

## You can complete the program remotely from anywhere in Australia by phone or video call.

Sessions with your coach can be booked between Monday to Friday 8am to 8pm AEST. The program is closed on public holidays.

At each session you'll review your progress with your mental health coach so you can see how you're tracking.



**ENQUIRE FOR  
SUPPORT**

**SUBMIT AN ENQUIRY HERE**

# Shoalhaven & Southern Highlands Business Support Directory



## Shoalhaven Business Chamber

P: 02 4423 3582  
E: [admin@shoalhavenbusiness.com.au](mailto:admin@shoalhavenbusiness.com.au)  
PO Box 361 Nowra NSW 2541  
<https://www.shoalhavenbusinesschamber.com.au/>

## Shoalhaven Professional Business Association (spba)

<http://www.shoalhavenprofessionals.com.au/>

## South East Farmers Network

[sfn.nsw.gov.au](https://sfn.nsw.gov.au)

## Milton Ulladulla Business Chamber info and links

P: 02 4418 1522  
E: [office@businessmiltonulladulla.com.au](mailto:office@businessmiltonulladulla.com.au)  
PO Box 1048 Ulladulla NSW 539

## Basin Business Forum

<https://basinbusinessforum.wixsite.com/basinbusinessforum>

## Illawarra Shoalhaven Joint Organisation

<http://illawarrajointorganisation.nsw.gov.au>

## Southern Highland's Chamber of Commerce & Industry

<https://sh.business/>

## Business Women's Network Southern Highlands

<https://bwnsh.com/>

## Entrepreneurship Facilitator Program

Naomi Smith  
P: 02 4851 4248  
E: [Naomi.@efprogram.org.au](mailto:Naomi.@efprogram.org.au)  
[efprogram.org.au](http://efprogram.org.au)

## Business Connect

Alan Pomeroy  
M: 0405 339 462  
E: [alan.pomeroy@enterpriseplus.org.au](mailto:alan.pomeroy@enterpriseplus.org.au)  
Area covered – Illawarra & Shoalhaven

## AusIndustry Entrepreneurs' Programme – Strengthening Business

John Lynch  
M: 0408 476 909  
E: [John.Lynch@ep.industry.gov.au](mailto:John.Lynch@ep.industry.gov.au)  
[www.business.gov.au/EP](http://www.business.gov.au/EP)

## Service NSW for Business

<https://www.service.nsw.gov.au/business>

## Business Connect

Daryl Tonks  
M: 0424 280 521  
E: [daryl.tonks@enterpriseplus.org.au](mailto:daryl.tonks@enterpriseplus.org.au)  
Area covered – Wingecarribee, Goulburn-Mulwaree, Queanbeyan-Palerang

## Rewire Program

Geoff Lisle  
M: 0409 344 744  
E: [Geoff@rfcnsw.com.au](mailto:Geoff@rfcnsw.com.au)  
[www.rfcnsw.com.au](http://www.rfcnsw.com.au)

## Self Employment Assistance Program

Virginia Wren  
M: 0418 436 227  
E: [virginiawren@illawarraitec.edu.au](mailto:virginiawren@illawarraitec.edu.au)  
[www.illawarraitec.edu.au](http://www.illawarraitec.edu.au)

Craig Condy  
Business Coach  
Sarina Russo Entrepreneurs  
M: 0492 283 938  
E: [CondyC@sarinarusso.com.au](mailto:CondyC@sarinarusso.com.au)

Diane Scheimer  
Consultant – Self-Employment Assistance  
APM  
M: 0437 925 795 |  
E: [Diane.Scheimer@apm.net.au](mailto:Diane.Scheimer@apm.net.au)

## AusIndustry – services for Australian businesses and industry

<https://business.gov.au/>

## Research & Development Tax Incentive Programme

<https://business.gov.au/grants-and-programs/research-and-development-tax-incentive>  
<https://www.industry.gov.au/policies-and-initiatives/research-and-development-tax-incentive>

## Entrepreneurs Programme

<https://business.gov.au/grants-and-programs/entrepreneurs-programme>

## 3.2 Growing your business

<https://business.gov.au/grants-and-programs/entrepreneurs-programme#grow-my-business>

## 3.3 Innovation Connections

<https://business.gov.au/grants-and-programs/innovation-connections>

Local Advisor is Bruce Thomson – Innovation Connections Facilitator, Entrepreneurs' Programme  
M: 0409 513 906  
E: [bruce.thomson@ep.industry.gov.au](mailto:bruce.thomson@ep.industry.gov.au)

## 3.4 Accelerating Commercialisation

<https://business.gov.au/grants-and-programs/accelerating-commercialisation>

## Regional Development Australia Southern Inland (RDA SI)

<https://www.rdasi.org.au/>

